



Close Coupled Motor

Catalog 2600-510-02/USA

B



Performance Information

The Parker close coupled electric motor/pump provides exceptional performance and compact size at an economical price. Also, with the elimination of the mounting adaptor and coupling required for installation to standard motors, problems associated with misalignment are virtually eliminated.

Features

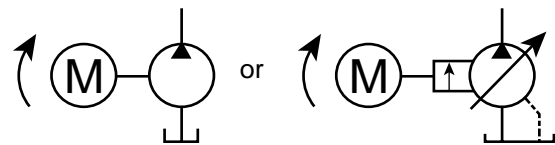
- **Pump installed to motor** – Saves labor, hardware dollars.
- **Option of steel band or cast iron housing with finned construction** which provides excellent heat dissipation.
- **Internal spline** – Accepts SAE “AA”, “A” or “B” shafts, offers superior engagement characteristics.
- **SAE pilot sizes** – Offers a variety of motor/pump combinations.
- **Elimination of Mounting Adaptor** – More compact package, less costly means of mounting pump to motor. Eliminates potential for misalignment.

Installation Information

- Size motor by utilizing pump performance curves in piston pump or gear pump catalogs.
- When installing pump in the field, make sure spline socket is fully packed with high pressure lubricant.
- Always check incoming voltage to match wiring at motor conduit box.
- Upon startup, take an amperage draw reading at system full flow and full pressure cycle. Make sure that does not exceed max amperage draw stated on motor nameplate.
- Refer to pump catalog for installation data pertaining to inlet conditions, max operating temperatures and recommended filtration parameters.



Schematic Symbol



Specifications

Motors

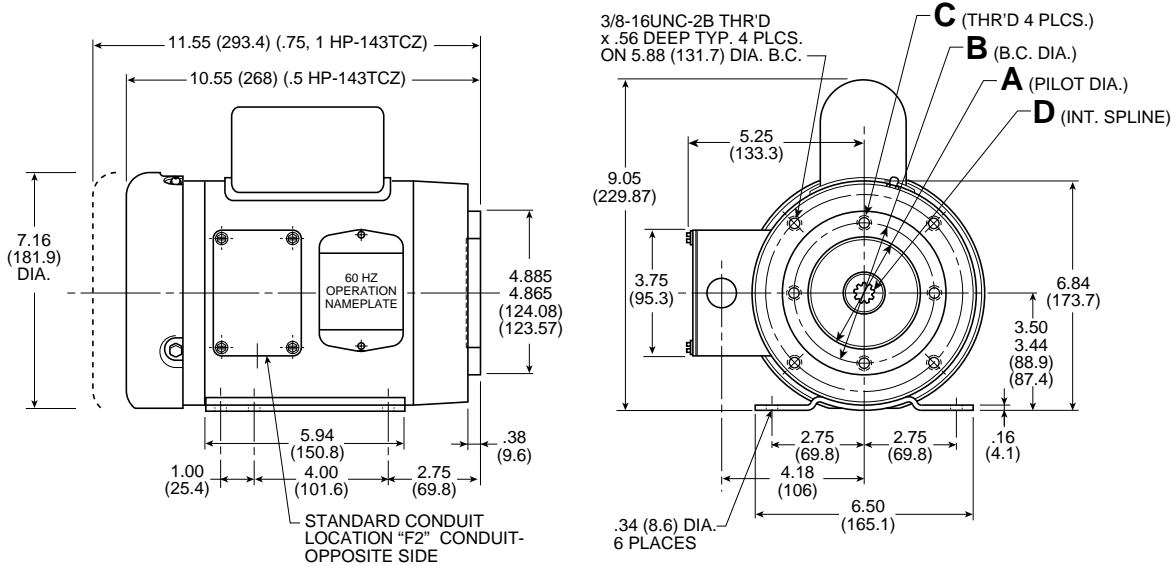
- Horsepower Ratings:** 1/2, 3/4, 1 HP, 1 Phase 60 Hz, 1, 1.5, 2, 3, .5, 7.5, 10 HP, 3 Phase 50/60 Hz
- Speed Ratings:** 1725 RPM (60 Hz)
1425 RPM (50 Hz)
- Voltage:** See Performance Data
- Frequency:** 60, 50/60 Hz
- Type:** TEFC
- Insulation Class:** B
- Temperature Rating:** 40°C, Amb. Cont.
- Mounting:** SAE “AA”, 9 Tooth Spline – 20/40 D.P.
SAE “A”, 9 Tooth Spline – 16/32 D.P.
SAE “B”, 13 Tooth Spline – 16/32 D.P.

Frame	Steel Band Motors										Cast Iron Motors					
	143/145 TCZ						182/184 TYZ		213/215 TYZ		145 TCZ			182/184 TYZ		
HP	.5	.75	1	1.5	2	3	3	5	7.5	10	1	1.5	2	3	3	5
SAE “AA” Mount	●	●	●	●	●	●										
SAE “A” Mount			●	●	●	●	●	●	●	●	●	●	●	●	●	
SAE “B” Mount							●	●	●	●					●	●

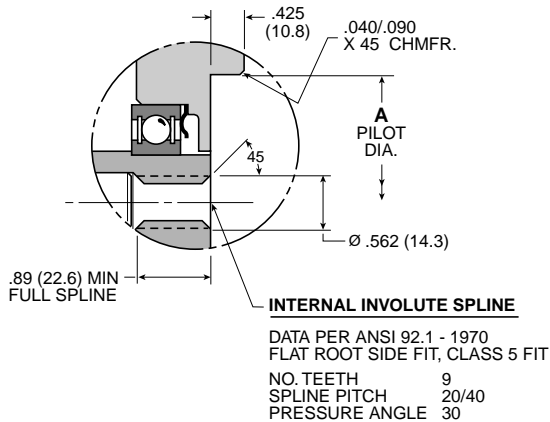
● Standard Motors Available from Stock.

**Dimensions – .5, .75, 1 HP CC Motor, Single Phase
 Steel Band – 145 TCZ Frame
 SAE “AA” Pump Mount**

Millimeter equivalents for inch dimensions are shown in (**)



SAE “AA” MOUNT - SPLINE & PILOT FACE DETAIL



Single Phase Motors		60 Hz Operation 115/230 Volts 1725 RPM, 1 PH		
Model Number	HP	S.F.	F.L. Amps	F.L. Torque ft.-lbs.
MESA1N6C	.5	1.25	8.0/4.0	1.5
MESB1N6C	.75	1.25	10.6/5.3	2.25
MESC1N6C	1	1.15	12.8/6.4	3.0

Motor Code	HP-Frame	Pilot Size	A	B	C	D
MESA1N6C	.5 HP - 145TCZ	SAE "AA"	2.001	3.250	5/16-18UNC x .63 Deep	9 Tooth
MESB1N6C	.75 HP - 145TCZ		2.003			20/40 Pitch (See Detail)
MESC1N6C	1 HP - 145TCZ					

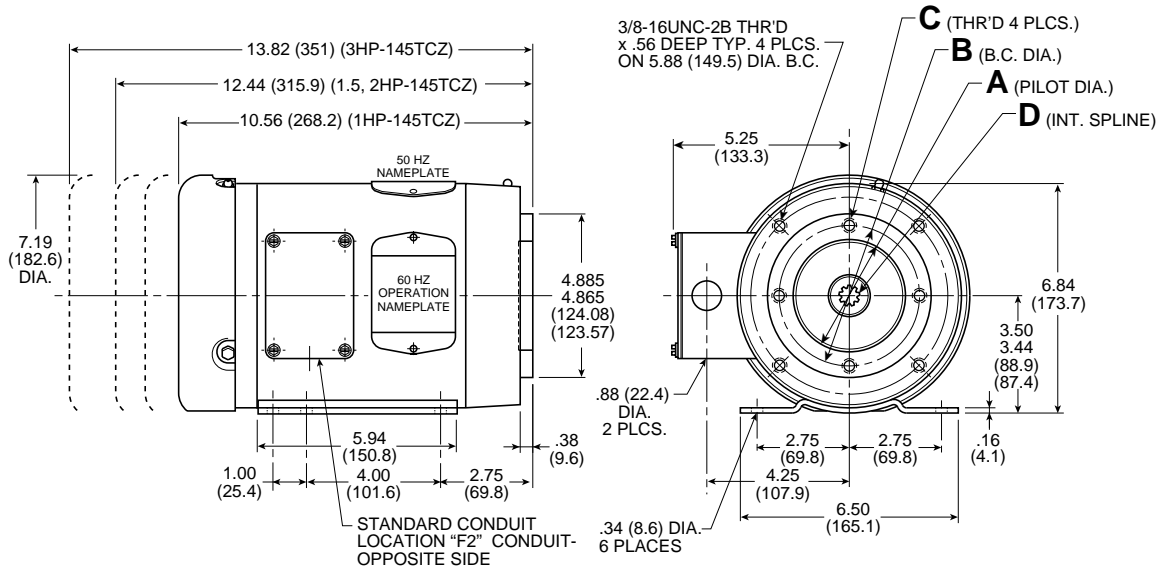
CAUTION:
 MOTOR INTERNAL SPLINE MUST BE PACKED WITH HIGH PRESSURE LUBRICANT GREASE PRIOR TO INSTALLATION OF PUMP.
 877656 GASKET KIT IS SUPPLIED (SAE-AA)

NOTE: For available pumps see page chart on page B92.

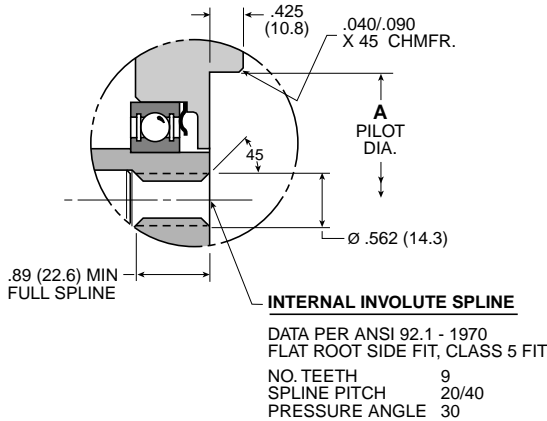


**Dimensions – 1, 1.5, 2, 3 HP CC Motor
 Steel Band – 145 TCZ Frame
 SAE “AA”, SAE “A” Pump Mount**

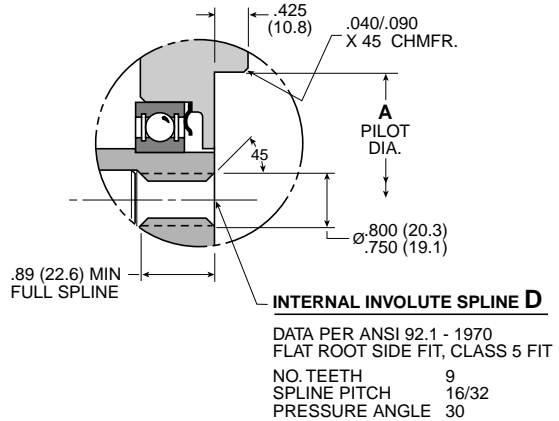
Millimeter equivalents for inch dimensions are shown in (**)



SAE “AA” MOUNT - SPLINE & PILOT FACE DETAIL



SAE “A” MOUNT - SPLINE & PILOT FACE DETAIL



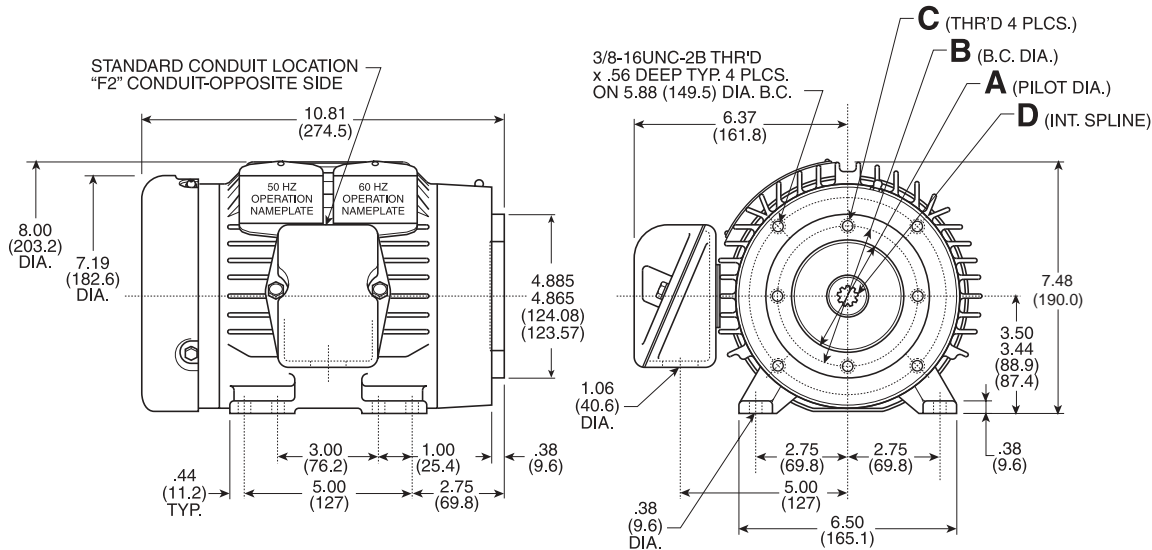
Motor Code	HP-Frame	Pilot Size	A	B	C	D
MESC1P7C	1 HP - 145TCZ	SAE "AA"	2.001 2.003	3.250	5/16-18UNC x .63 Deep	9 Tooth 20/40 Pitch (See Detail)
MESD1P7C	1.5 HP - 145TCZ					
MESE1P7C	2 HP - 145TCZ					
MESF1P7C	3 HP - 145TCZ					
MESC2P7C	1 HP - 145TCZ	SAE "A"	3.253 3.251	4.188	3/8-16UNC x .88 Deep	9 Tooth 16/32 Pitch (See Detail)
MESD2P7C	1.5 HP - 145TCZ					
MESE2P7C	2 HP - 145TCZ					
MESF2P7C	3 HP - 145TCZ					

CAUTION:
 MOTOR INTERNAL SPLINE MUST BE PACKED WITH HIGH PRESSURE LUBRICANT GREASE PRIOR TO INSTALLATION OF PUMP.
 877656 (SAE-AA) OR 877657 (SAE-A) GASKET KIT IS SUPPLIED.

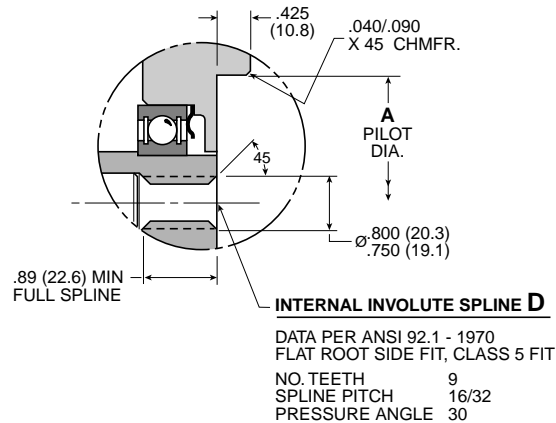
NOTE: For available pumps see page chart on page B92.

**Dimensions – 1, 1.5, 2, 3 HP CC Motor
 Cast Iron – 145 TCZ Frame
 SAE “A” Pump Mount**

Millimeter equivalents for inch dimensions are shown in (**)



SAE "A" MOUNT - SPLINE & PILOT FACE DETAIL



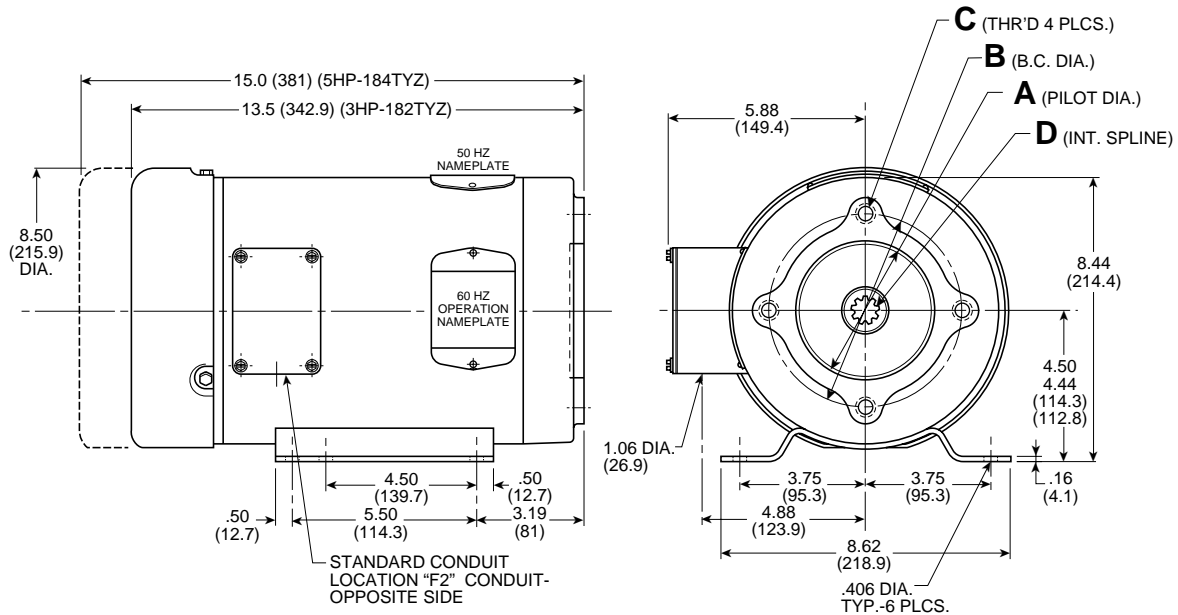
Motor Code	HP-Frame	Pilot Size	A	B	C	D
MEC2P7C	1 HP - 145TCZ	SAE "A"	3.253 3.251	4.188	3/8-16UNC x .88 Deep	9 Tooth 16/32 Pitch (See Detail)
MED2P7C	1.5 HP - 145TCZ					
MEE2P7C	2 HP - 145TCZ					
MEF2P7C	3 HP - 145TCZ					

CAUTION:
 MOTOR INTERNAL SPLINE MUST BE PACKED WITH HIGH PRESSURE LUBRICANT GREASE PRIOR TO INSTALLATION OF PUMP. 877657 (SAE-A) GASKET KIT IS SUPPLIED.

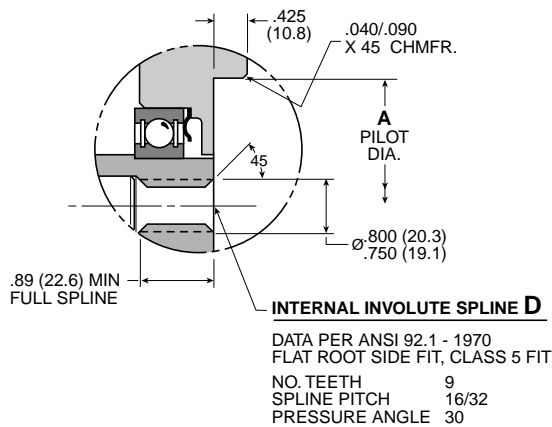
NOTE: For available pumps see page chart on page B92.

**Dimensions – 3, 5 HP CC Motor
 Steel Band – 182/184 TYZ Frame
 SAE “A”, SAE “B” Pump Mount**

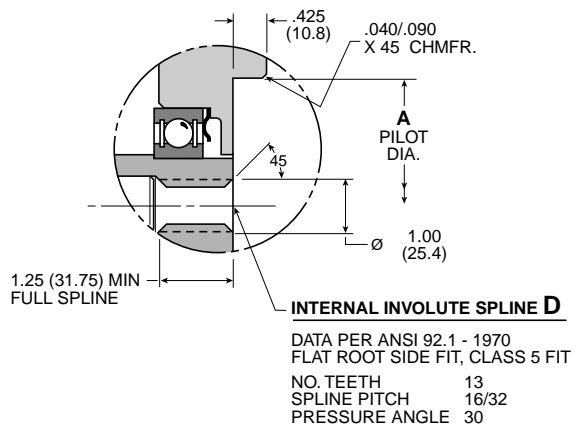
Millimeter equivalents for inch dimensions are shown in (**)



SAE “A” MOUNT - SPLINE & PILOT FACE DETAIL



SAE “B” MOUNT - SPLINE & PILOT FACE DETAIL



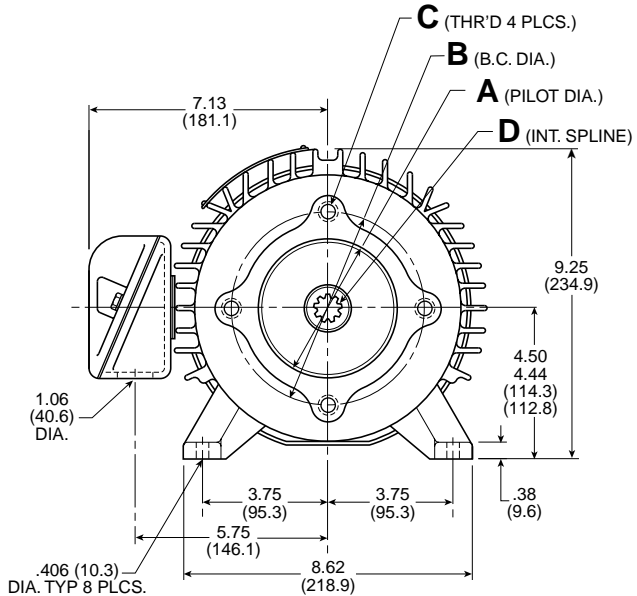
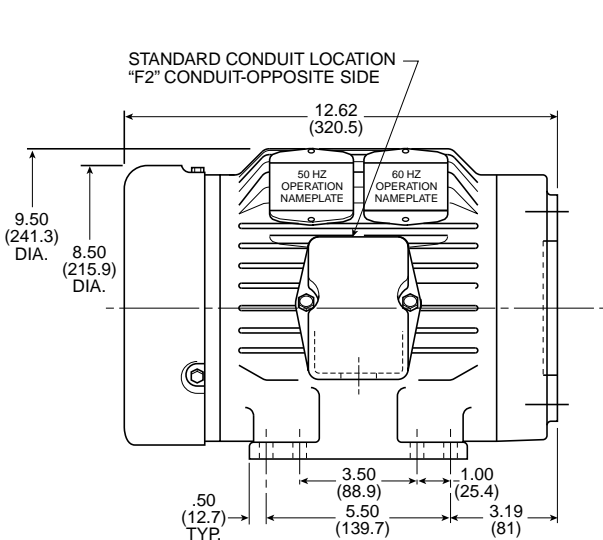
CAUTION:
 MOTOR INTERNAL SPLINE MUST BE PACKED WITH HIGH PRESSURE LUBRICANT GREASE PRIOR TO INSTALLATION OF PUMP.
 877657 (SAE-A) GASKET KIT IS SUPPLIED.

Motor Code	HP-Frame	Pilot Size	A	B	C	D
MESG2P7C	3 HP - 182TYZ	SAE “A”	3.2530	4.188	3/8-16UNC x .75 Deep	9 Tooth 16/32 Pitch (See Detail)
MESH2P7C	5 HP - 184TYZ		3.2505			
MESG3P7C	3 HP - 182TYZ	SAE “B”	4.004	5.750	1/2-13UNC x .75 Deep	13 Tooth 16/32 Pitch (See Detail)
MESH3P7C	5 HP - 184TYZ		4.001			

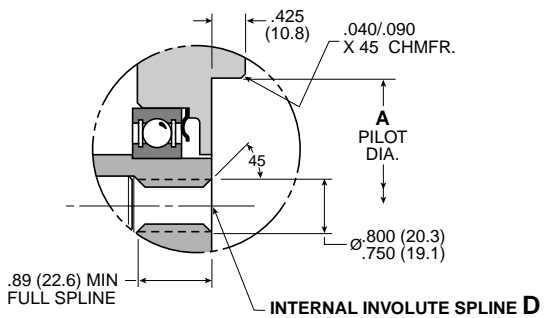
NOTE: For available pumps see page chart on page B92.

**Dimensions – 3, 5 HP CC Motor
 Cast Iron – 182/184 TYZ Frame
 SAE “A”, SAE “B” Pump Mount**

Millimeter equivalents for inch dimensions are shown in (**)

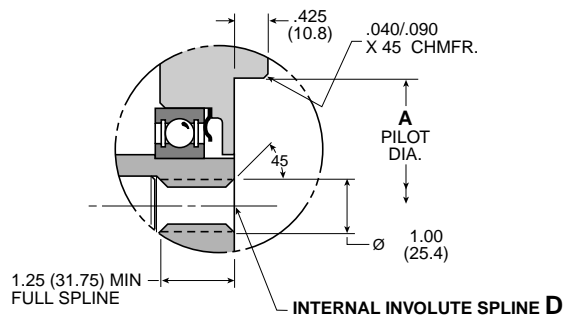


SAE “A” MOUNT - SPLINE & PILOT FACE DETAIL



DATA PER ANSI 92.1 - 1970
 FLAT ROOT SIDE FIT, CLASS 5 FIT
 NO. TEETH 9
 SPLINE PITCH 16/32
 PRESSURE ANGLE 30

SAE “B” MOUNT - SPLINE & PILOT FACE DETAIL



DATA PER ANSI 92.1 - 1970
 FLAT ROOT SIDE FIT, CLASS 5 FIT
 NO. TEETH 13
 SPLINE PITCH 16/32
 PRESSURE ANGLE 30

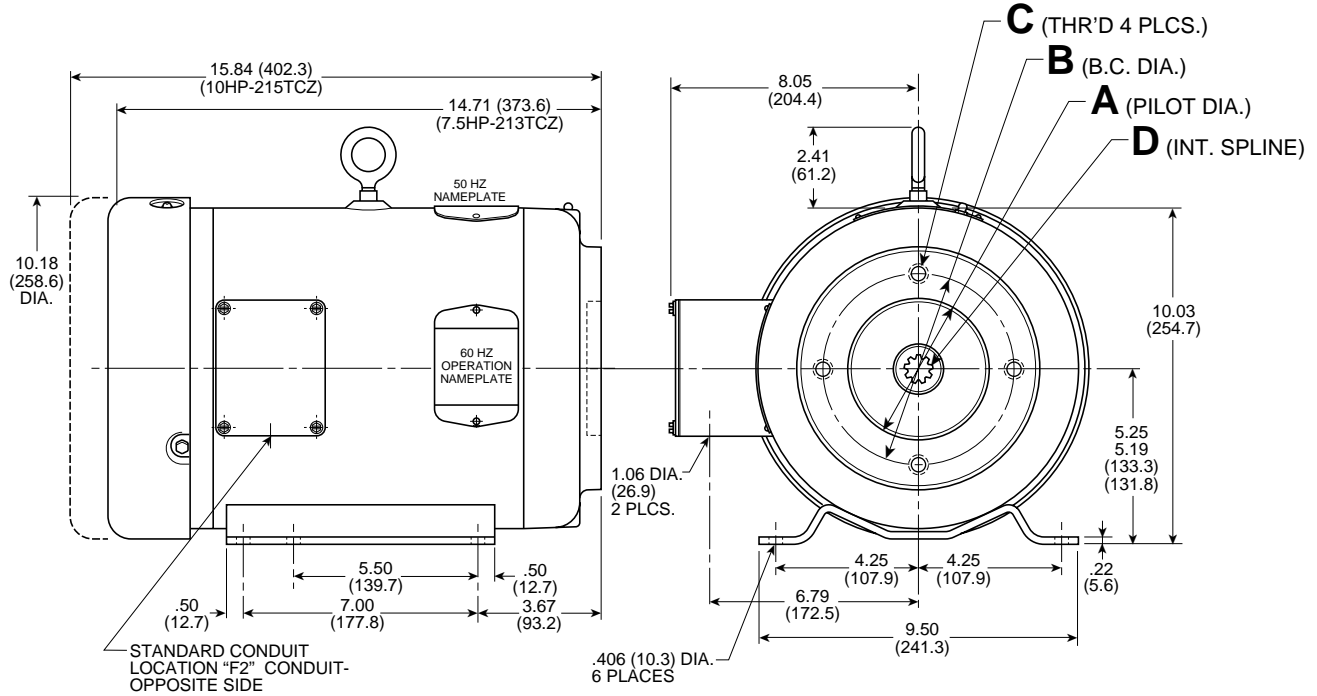
CAUTION:
 MOTOR INTERNAL SPLINE MUST BE PACKED WITH HIGH PRESSURE LUBRICANT GREASE PRIOR TO INSTALLATION OF PUMP. 877657 (SAE-A) GASKET KIT IS SUPPLIED.

NOTE: For available pumps see page chart on page B92.

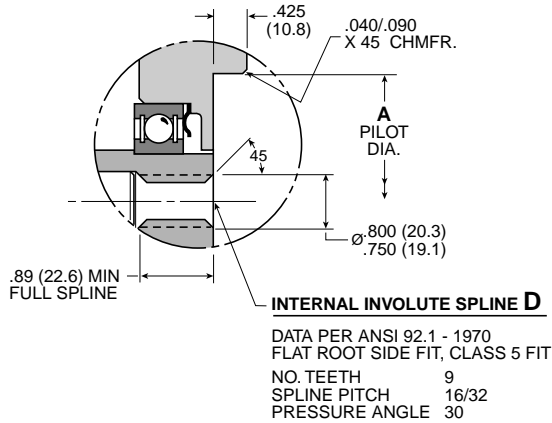
Motor Code	HP-Frame	Pilot Size	A	B	C	D
MEG2P7C	3 HP - 182TYZ	SAE "A"	3.2530	4.188	3/8-16UNC x .75 Deep	9 Tooth 16/32 Pitch (See Detail)
MEH2P7C	5 HP - 184TYZ		3.2505			
MEG3P7C	3 HP - 182TYZ	SAE "B"	4.004	5.750	1/2-13UNC x .75 Deep	13 Tooth 16/32 Pitch (See Detail)
MEH3P7C	5 HP - 184TYZ		4.001			

**Dimensions – 7.5, 10 HP CC Motor
 Steel Band – 213/215 TYZ Frame
 SAE “A”, SAE “B” Pump Mount**

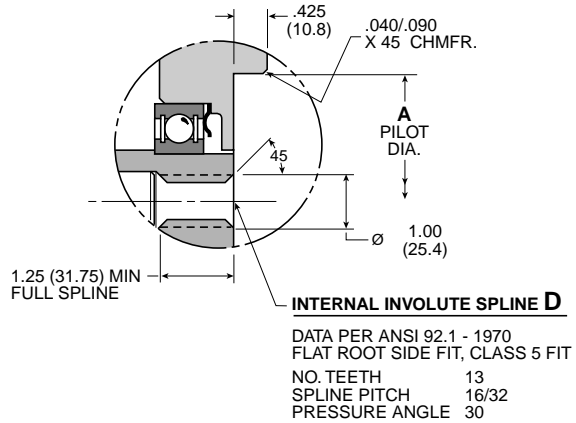
Millimeter equivalents for inch dimensions are shown in (**)



SAE “A” MOUNT - SPLINE & PILOT FACE DETAIL



SAE “B” MOUNT - SPLINE & PILOT FACE DETAIL



CAUTION:
 MOTOR INTERNAL SPLINE MUST BE PACKED WITH HIGH PRESSURE LUBRICANT GREASE PRIOR TO INSTALLATION OF PUMP.
 877657 (SAE-A) GASKET KIT IS SUPPLIED.

NOTE: For available pumps see page chart on page B92.

Motor Code	HP-Frame	Pilot Size	A	B	C	D
MESJ2P7C	7.5 HP - 213TYZ	SAE "A"	3.2530	4.188	3/8-16UNC x .75 Deep	9 Tooth 16/32 Pitch (See Detail)
MESK2P7C	10 HP - 215TYZ		3.2505			
MESJ3P7C	7.5 HP - 213TYZ	SAE "B"	4.004	5.750	1/2-13UNC x .75 Deep	13 Tooth 16/32 Pitch (See Detail)
MESK3P7C	10 HP - 215TYZ		4.001			

Steel Band – 145 TCZ Frame – SAE “AA” Pump Mount

Single Phase Motors	HP	60 Hz Operation 115/230 Volts — 1725 RPM 1 PH		
		S.F.	F.L. Amps	F.L. Torque Ft. Lbs.
MESA1N6C	.5	1.25	8.0/4.0	1.5
MESB1C6C	.75	1.25	10.6/5.3	2.25
MESC1N6C	1	1.15	12.8/6.4	3.0



Steel Band – 143/145 TCZ Frame – SAE “AA” and SAE “A” Pump Mount

Three Phase Motors	HP	60 Hz Operation 200-230/460 Volts — 1725 RPM 3 PH			50 Hz Operation 190/380-440 Volts — 1425 RPM 3 PH		
		S.F.	F.L. Amps	F.L. Torque Ft. Lbs.	S.F.	F.L. Amps	F.L. Torque Ft. Lbs.
MESC*P7*	1	1.25	3.2 - 3.0 / 1.5	3.0	1.00	3.2 / 1.6 - 1.5	3.6
MESD*P7*	1.5	1.00	4.5 - 4.2 / 2.1	4.5	1.00	5.4 / 2.7 - 2.6	5.4
MESE*P7*	2	1.00	6.4 - 6.0 / 3.0	6.0	1.00	7.0 / 3.5 - 3.4	7.2
MESF*P7*	3	1.15	8.5 - 8.2 / 4.1	9.0	1.00	9.6 / 4.8 - 4.7	11.0

Cast Iron – 145 TCZ Frame – SAE “A” Pump Mount

Three Phase Motors	HP	60 Hz Operation 200-230/460 Volts — 1725 RPM 3 PH			50 Hz Operation 190/380-440 Volts — 1425 RPM 3 PH		
		S.F.	F.L. Amps	F.L. Torque Ft. Lbs.	S.F.	F.L. Amps	F.L. Torque Ft. Lbs.
MEC2P7*	1	1.15	3.3 - 3.0 / 1.5	3.0	1.00	3.4 / 1.7 - 1.6	3.6
MED2P7*	1.5	1.15	4.8 - 4.6 / 2.2	4.5	1.00	5.4 / 2.7 - 2.6	5.4
MEE2P7*	2	1.15	5.6 - 5.3 / 2.6	6.0	1.00	6.2 / 3.1 - 3.0	7.2
MEF2P7*	3	1.15	8.3 - 8.0 / 4.0	9.0	1.00	9.4 / 4.7 - 4.4	11.0

Steel Band – 182/184 TYZ Frame – SAE “A” and SAE “B” Pump Mount

Three Phase Motors	HP	60 Hz Operation 208-230/460 Volts — 1725 RPM 3 PH			50 Hz Operation 190/380-440 Volts — 1425 RPM 3 PH		
		S.F.	F.L. Amps	F.L. Torque Ft. Lbs.	S.F.	F.L. Amps	F.L. Torque Ft. Lbs.
MESG*P7*	3	1.15	9.0 - 8.8 / 4.4	9.0	1.00	10.0 / 5.3 - 5.0	11.0
MESH*P7*	5	1.15	14.0 - 13.0 / 6.5	15.0	1.00	15.2 / 7.7 - 7.6	18.0

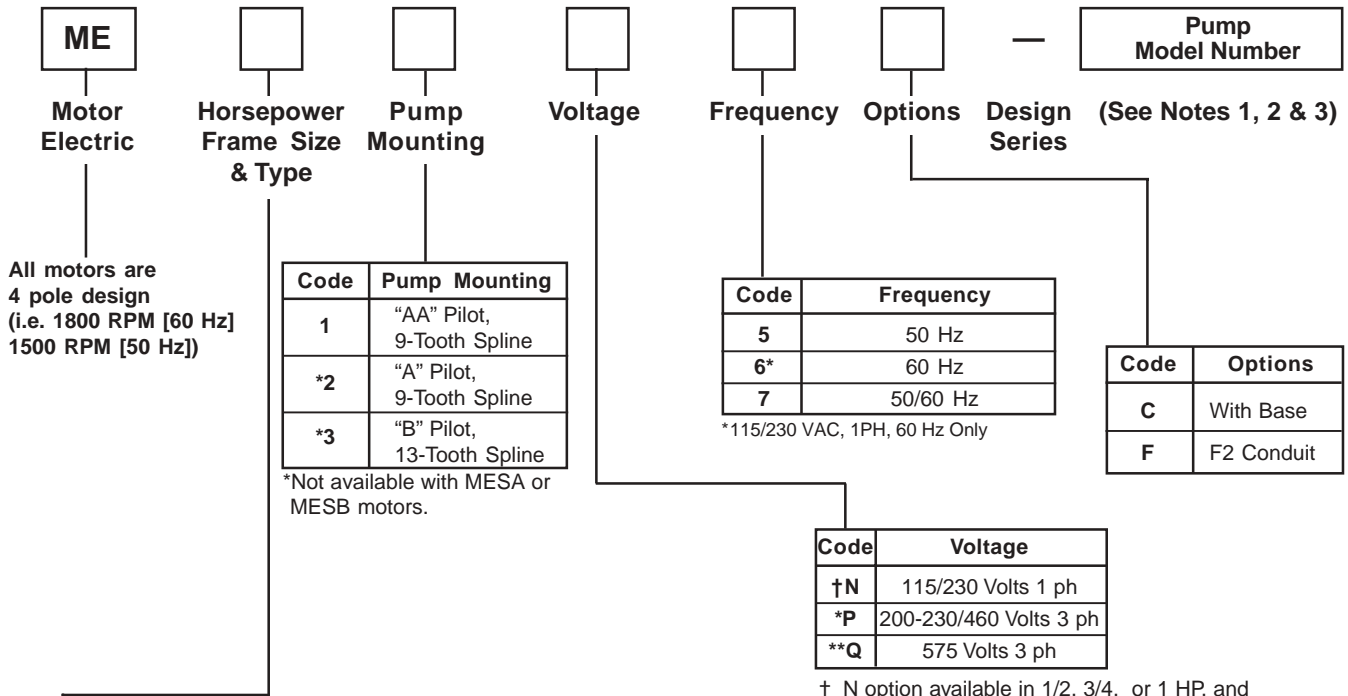
Cast Iron – 182/184 TYZ Frame – SAE “A” and SAE “B” Pump Mount

Three Phase Motors	HP	60 Hz Operation 200-230/460 Volts — 1725 RPM 3 PH			50 Hz Operation 190/380-440 Volts — 1425 RPM 3 PH		
		S.F.	F.L. Amps	F.L. Torque Ft. Lbs.	S.F.	F.L. Amps	F.L. Torque Ft. Lbs.
MEG*P7*	3	1.15	9.0 - 8.8 / 4.4	9.0	1.00	8.8 / 4.8 - 4.4	11.0
MEH*P7*	5	1.15	14.0 - 12.8 / 6.4	15.0	1.00	14.8 / 7.4 - 7.0	18.0

Steel Band – 213/215 TYZ Frame – SAE “A” and SAE “B” Pump Mount

Three Phase Motors	HP	60 Hz Operation 200-230/460 Volts — 1725 RPM 3 PH			50 Hz Operation 190/380 Volts — 1425 RPM 3 PH		
		S.F.	F.L. Amps	F.L. Torque Ft. Lbs.	S.F.	F.L. Amps	F.L. Torque Ft. Lbs.
MESJ*P7*	7.5	1.00	23.2 - 23.0 / 11.5	22.5	1.00	26.0 / 13.0	27.0
†MESK*P7*	10	1.00	28.0 - 26.0 / 13.0	30.0	1.00	26.0 / 13.0	35.8

† This motor is derated to 8.3 H.P. @ 50 Hz with 1.00 S.F.



Code	HP, Frame Size & Type	Reference Pump Mounting		
		"AA"	"A"	"B"
SA*	.5 HP, 143/5 TCZ, steel band	●		
SB*	.75 HP, 143/5 TCZ, steel band	●		
SC	1 HP, 143/5 TCZ, steel band	●	●	
C	1 HP, 143/5 TCZ, cast iron		●	
SD	1.5 HP, 143/5 TCZ, steel band	●	●	
D	1.5 HP, 143/5 TCZ, cast iron		●	
SE	2 HP, 143/5 TCZ, steel band	●	●	
E	2 HP, 143/5 TCZ, cast iron		●	
SF	3 HP, 143/5 TCZ, steel band	●	●	
F	3 HP, 143/5 TCZ, cast iron		●	
SG	3 HP, 182/4 TYZ, steel band		●	●
G	3 HP, 182/4 TYZ, cast iron		●	●
SH	5 HP, 182/4 TYZ, steel band		●	●
H	5 HP, 182/4 TYZ, cast iron		●	●
SJ	7.5 HP, 213 TYZ, steel band		●	●
SK	10 HP, 215 TYZ, steel band		●	●

*115/230 VAC, 1PH, 60 Hz Only

● Standard motors available from stock

† N option available in 1/2, 3/4, or 1 HP, and SAE "AA" pilot only.

* Voltage option "P" motors are dual nameplated for use on 50 & 60 Hz. 60 Hz voltages are shown. 50 Hz voltages will vary with motor frame size.

Cast Iron frame will run @ 200-220/380-440 volts -50 Hz.
Steel band frame is limited to 190/380 volts-50 Hz on 3, 5, 7.5, and 10 HP motors.

** Available with 60Hz., 3 Phase only. Consult factory for delivery information.

- Note 1:** A complete pump model number must be placed after the dash "—" which follows the motor code.
- Note 2:** Pumps can be any configuration that corresponds to the pump mounting called out in the motor code.
- Note 3:** For list price of piston pumps see their corresponding pages in HY13-PL2600/US. For gear pumps, consult Gear Pump Division.
- Note 4:** Motors with "AA" pilot can only be ordered with PGP505 Gear Pumps listed in table below.
- Note 5:** PGP505 Gear Pumps listed in the table and the PVP1630B*2 Piston Pumps are the only pumps which qualify for the 10 working day leadtime.

Parker Gear Pumps Available	
Product Code	Ordering Code
PGP505A0020	331-9110-264
PGP505A0030	331-9110-265
PGP505A0040	331-9110-266
PGP505A0050	331-9110-262
PGP505A0060	331-9110-263



Close Coupled Motor Series ME

Pilot	Description	Model Number
SAE-AA	PGP505A0020, 2 CC/REV, SPLINE SHAFT 9T 20/40 PITCH	331-9110-264
	PGP505A0030, 3 CC/REV, SPLINE SHAFT 9T 20/40 PITCH	331-9110-265
	PGP505A0040, 4 CC/REV, SPLINE SHAFT 9T 20/40 PITCH	331-9110-266
	PGP505A0050, 5 CC/REV, SPLINE SHAFT 9T 20/40 PITCH	331-9110-262
	PGP505A0060, 6 CC/REV, SPLINE SHAFT 9T 20/40 PITCH	331-9110-263
SAE-A	PGP511A0700, 7 CC/REV, SPLINE SHAFT 9T 16/32 PITCH	
	PGP511A0100, 10 CC/REV, SPLINE SHAFT 9T 16/32 PITCH	
	PGP511A0110, 11 CC/REV, SPLINE SHAFT 9T 16/32 PITCH	
	PGP511A0140, 14 CC/REV, SPLINE SHAFT 9T 16/32 PITCH	
	PGP511A0180, 18 CC/REV, SPLINE SHAFT 9T 16-32 PITCH	
	PGP511A0210, 21 CC/REV, SPLINE SHAFT 9T 16/32 PITCH	
	PGP511A0280, 28 CC/REV, SPLINE SHAFT 9T 16/32 PITCH	
	PVP16, 16 CC/REV, SPLINE SHAFT 9T 16/32 PITCH	PVP16**B
SAE-B	PVP23, 23 CC/REV, SPLINE SHAFT 13T 16/32 PITCH	PVP23**B
	PVP33, 33 CC/REV, SPLINE SHAFT 13T 16/32 PITCH	PVP33**B
	PVP41, 41 CC/REV, SPLINE SHAFT 13T 16/32 PITCH	PVP41**B
	PVP48, 48 CC/REV, SPLINE SHAFT 13T 16/32 PITCH	PVP48**B